

NAVARRO COUNTY COMMISSIONERS COURT
ORDER NO. 2026-2

On the 11th day of May, 2026, the County Commissioners Court of Navarro County, Texas, convened in Special Session of the said Court, at 300 West 3rd Ave., Corsicana, Navarro County, Texas, with the following members present, to wit:

County Judge	H. M. Davenport, Jr.
Commissioner, Precinct 1	Jason Grant
Commissioner, Precinct 2	Eddie Perry
Commissioner, Precinct 3	Eddie Moore
Commissioner, Precinct 4	David Brewer

and among other proceedings, on Motion of Commissioner Moore, seconded by Commissioner Grant, being duly put and carried, the following Order was passed.

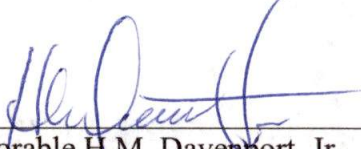
WHEREAS, Chapter 251 of the Texas Transportation Code authorizes the County Commissioners Court to close, abandon, and vacate certain identified county roads or portions of roads; and

WHEREAS, on May 11, 2026, the Navarro County Commissioners Court has closed upon request S.E.C.R. 1210 said road as being the same as in the attached Exhibit "A" approximately 4630 feet. This road is to be closed, abandoned, and vacated pursuant to the terms of Chapter 251 of the Texas Transportation Code:

Now therefore, BE IT ORDERED by the Commissioners Court of Navarro County, Texas that S.E.C.R. 1210 or more specifically, portions of said road as noted above is hereby **CLOSED, ABANDONED, AND VACATED.**

BE IT FURTHER ORDERED that this Clarification Order is officially filed with the Navarro County Clerk, as is required by law.

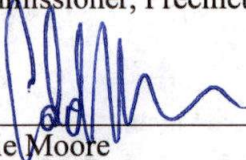
APPROVED by the Navarro County Commissioners Court on this 11th day of May, 2026.



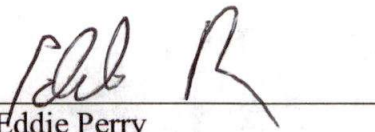
 Honorable H.M. Davenport, Jr.
 Navarro County Judge



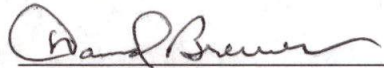
Jason Grant
Commissioner, Precinct 1



Eddie Moore
Commissioner, Precinct 3



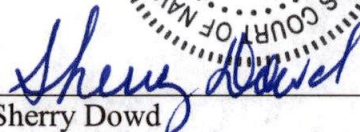
Eddie Perry
Commissioner, Precinct 2



David Brewer
Commissioner, Precinct 4

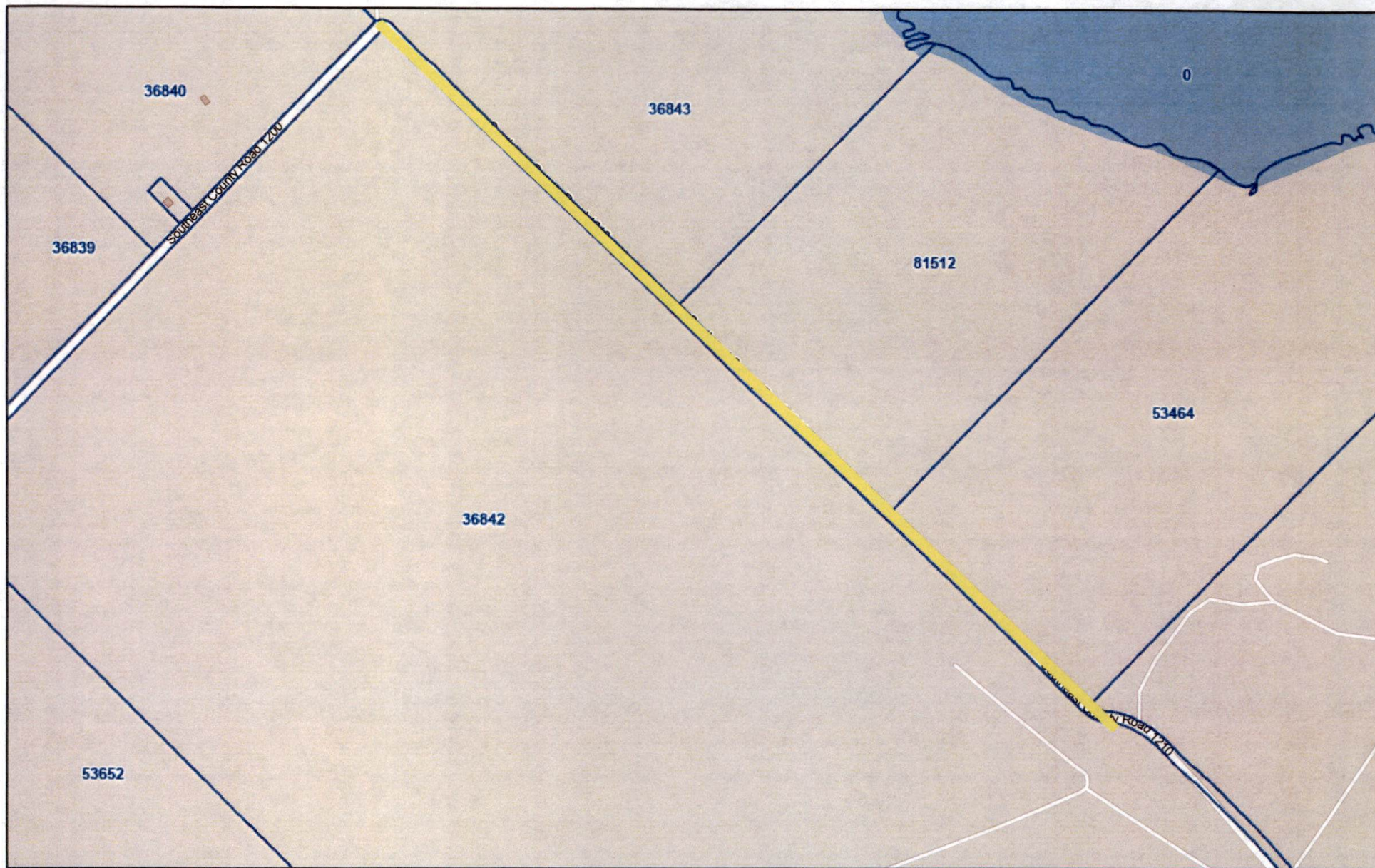


ATTEST:



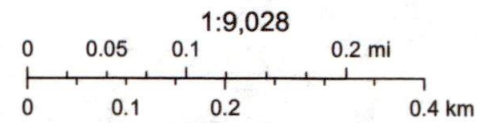
Sherry Dowd
Navarro County Clerk

Navarro CAD



4/23/2026, 12:43:05 PM

 Parcels



Map data © OpenStreetMap contributors, Microsoft, Facebook, Google, Esri
Community Maps contributors, Map layer by Esri

Navarro CAD

This product is for informational purposes and may not have been prepared for, or be suitable for legal, engineering, or surveying purposes. Users of this information should review or consult the primary data and information sources to ascertain the usability of the